



+ 2 x Keys  
2 x Remote Controls

## Automatic Parking Lock

Specifications	
SKU	APARKLOCKBL
Components	Automatic Parking Lock x 1
	Remote Control x 2
	Keys x 2
	Rechargeable Batteries x 4
	Battery Charger x 1
Colour	Silver Metallic (bar) Black (base)
Size	470mm x 600mm x 360mm
Height	Raised: 600mm
	Down: 75mm
Range	Remote Control: 30 meter
	APP Range: 30 meter
Fixings	Mounting Bolts x 3 Included
Warranty	12 Months Warranty



Water Resistant



Smartphone Control



Blue Tooth Available



30 Meter Range



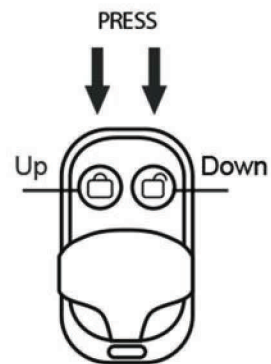
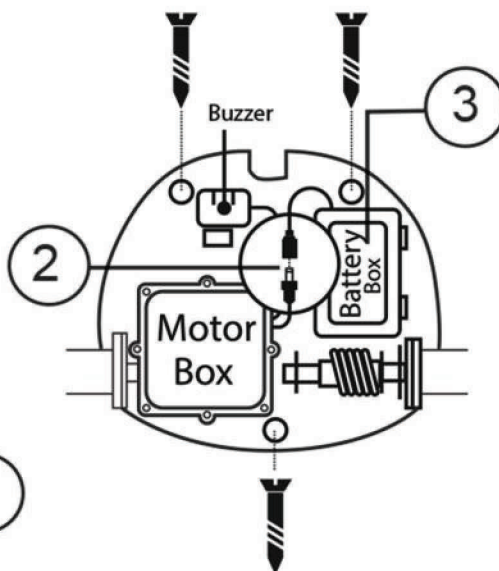
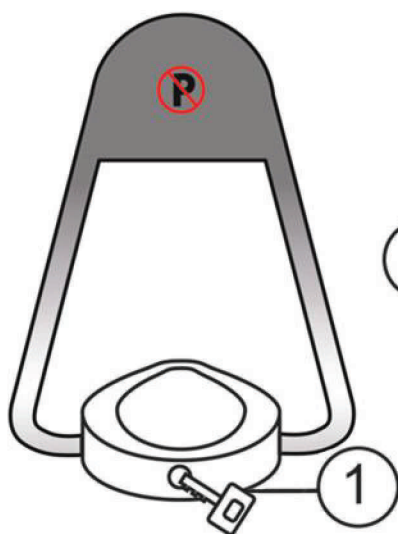
Rechargeable Batteries x 4 & Charger Included



Fixings Included

### Description:

Control access of your parking lot using Bluetooth Technology via a Smartphone. Battery operated, simply press the Up/Down button on Remote Control or through the APP to raise or lower the barrier discreetly.



Remote Control A

We recommend users complete initial setup prior to fixing unit to ground.

## Connection & Remote Control A

1. Use the supplied keys to open the base cover.
2. Connect the Battery Box to the Motor Box.
3. Open the Battery Box, put in 4 x D type batteries.
4. You will hear a 'beep' sound which indicates that the unit is connected correctly.
5. You can now close the Battery Box.
6. Remote Control A comes already paired with the main unit. Make sure that there is nothing in the path of the main unit raising / lowering, press up / down button to test Remote Control A.



QR Code for iPhone



QR Code for Android Phone

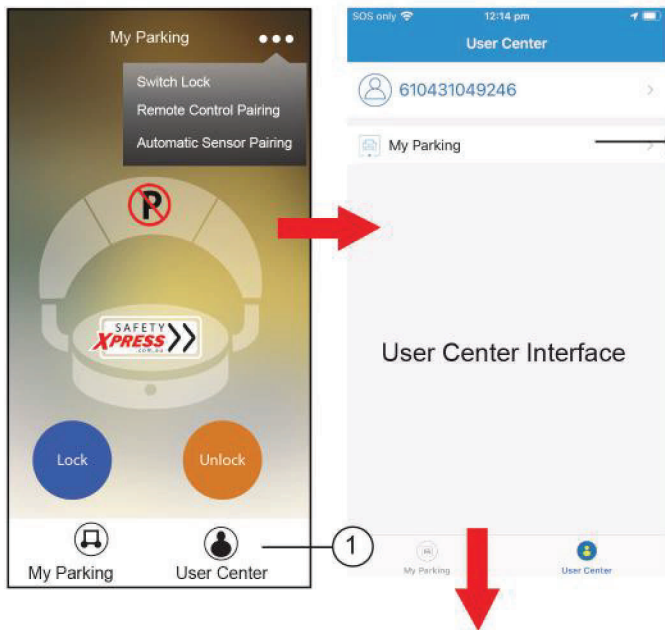
**NOTE:** You can also scan QR codes to download our control APP

## APP Pairing

Download and install KAVASS App on your Smart Phone from Google Play Store (Android) or Apple Store (iOS).

\* Note Google Play Store is pending approval as of 03/22

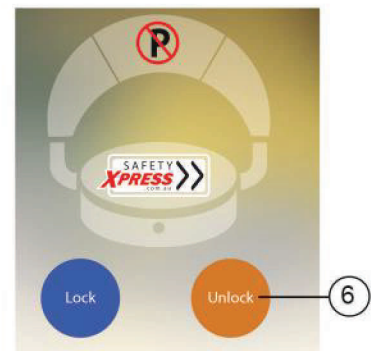
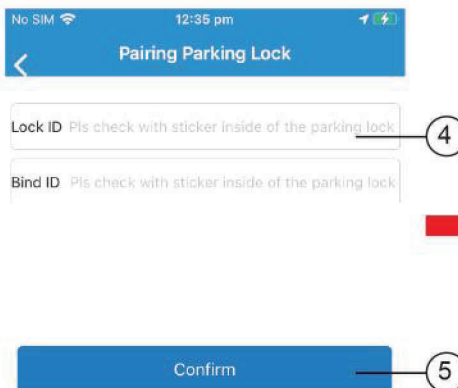
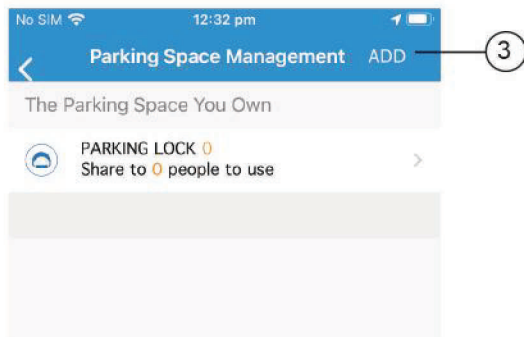
Open the APP, after registration, you will see interface as shown below

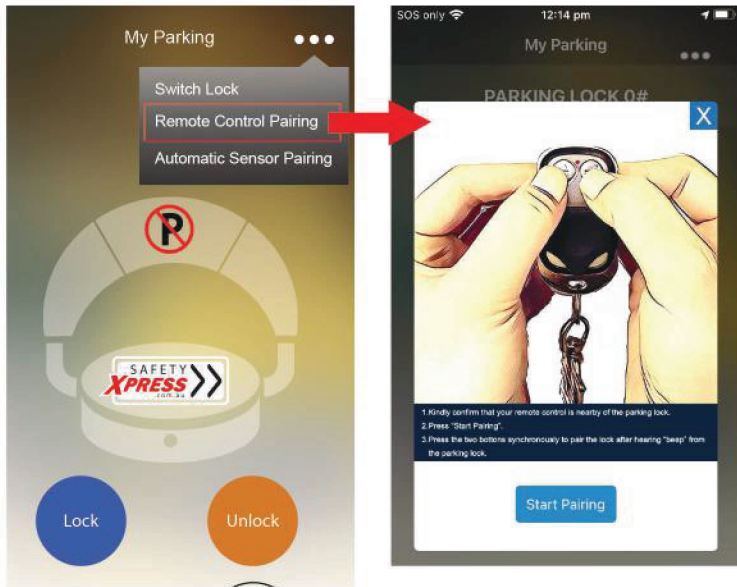


2. Make sure your SmartPhone and Remote Controls are nearby and within operating range of the main unit.

1. Click User Center
2. Click My Parking
3. Click ADD
4. Open Base Cover to find your Lock ID and Bind ID. Please note these IDs are case sensitive.
5. Click Confirm
6. You can now Lock/Unlock your parking lock using the APP

**Note:** Multiple parking locks can be connected and controlled via the APP on a single mobile device by following same steps above, and go to Switch Lock to switch between locks





## Remote Control B Pairing

Open KAVASS App, on right hand side top corner, click the 3 dots, and Select > Remote Control Pairing.

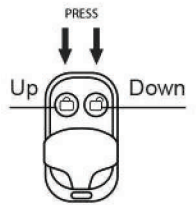
Follow prompts on the next interface:

Press both buttons on Remote Control B simultaneously, after hearing a 'beep' sound, your Automatic Parking Lock should be paired with your Smart Phone.

You can now test the remote control functions as follows:

Press Button with Lock image to raise the barrier bar up.

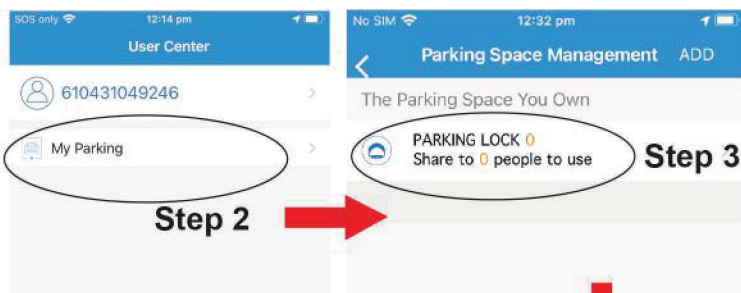
Press Button with Unlock image: to lower the barrier bar up.



Remote Control B

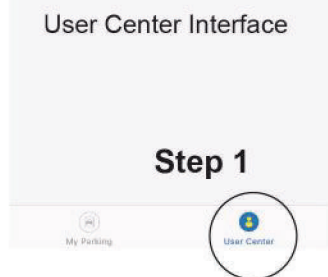
Note: if you have purchased additional remote control units, the same steps would apply to pair all additional remote controls.

**Step 1**

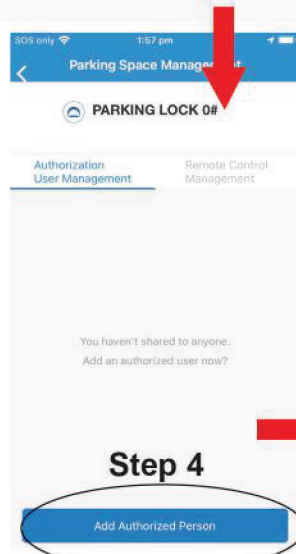


**Step 2**

**Step 3**



**Step 1**



**Step 4**

## Multiple User Control - APP

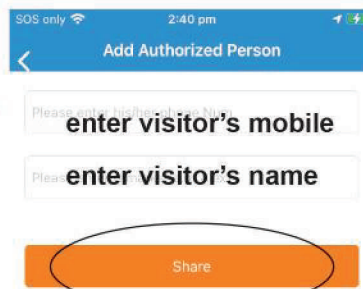
Owner can give access to other users - such as visitors by following below steps

1. Click User Center (at bottom right of main screen)
2. Click My Parking
3. Pick the Parking Lock you want to give visitor access to
4. Add Authorised Person (visitor)
5. Enter visitor's Mobile Number and Name
6. Click Share
7. Once sharing is successful, all users should see the same interface (blue and white interface as shown on left)

Visitors need to download and install KAVASS APP on their phone first, and both owner and visitor need to be within the operating range of the Automatic Parking Bollard.

Once successful, both owner and visitor will see the same blue/white interface

If unsuccessful, visitor won't see the blue/ white interface at all.



**Step 5**

### Note:

Owner has control to add/delete visitors at any time

Max. 10 people can be given temp. access as visitors to the Parking Lock. (by repeating the same steps)

## Automatic Parking Lock - Features

### Water Resistant:

Automatic Parking Lock can withstand the weather.  
eg. in case of heavy rainfall the device can still work for at least an hour without any adverse affect.

### Self Protection:

In case of misuse or that a vehicle has rolled onto the Automatic Parking Lock, the unit itself can self protect by:

- Rotate back and forth to protect itself at 180°
- Pressure resistance <= 2000kg.
- Automatic reset if it is being pushed by force when operating.



### Battery Life:

When the batteries are about to run out, the Automatic Parking Lock will make an alarm sound to remind user to replace batteries.

	Battery Type		
	Dry Battery	Lead Acid Battery	Lithium Battery
Charging Method	--	Chargeable	Chargeable
Battery Life	12 Months	24 Months	5 Years
Working Temperature	-10°C to 50°C	-10°C to 50°C	-22°C to 55°C
Life Span	3 - 6 Months	3 Months	8 - 12 Months

### Note:

DO NOT try to rise the Automatic Parking Lock barrier bar when it is under vehicle.

DO NOT try to park the car when the Automatic Parking Lock barrier bar is rising or lowering.